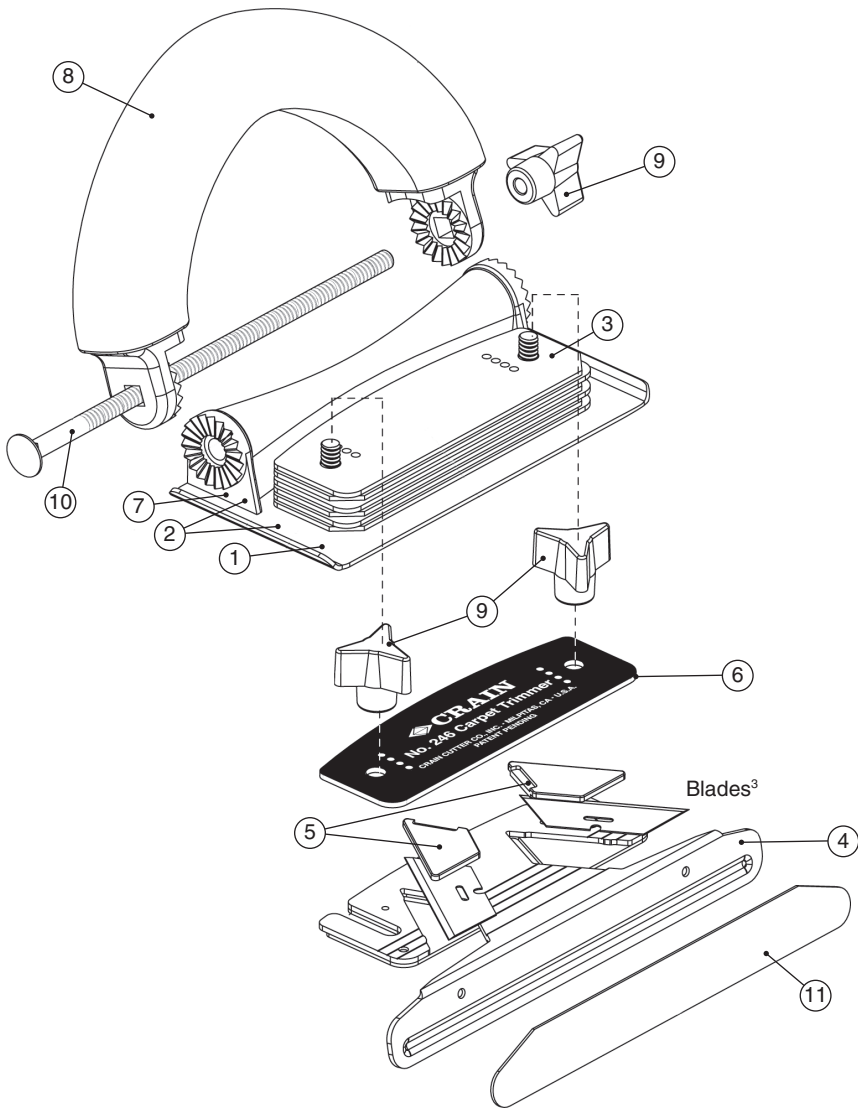


No. 246 Conventional Back Carpet Trimmer



Key	Item Number	Qty. Used	Description	List Price
1	1246-B	1	Base Only	19.49
2	1246-C	1	Base and Mounting Bracket Assembly	25.69
3	1246-D	1 set	Universal Shims (6/set)	6.19
4	1246-E	1	Wall Runner	19.49
5	1246-F	1 set	Blade Clamps (2/set)	9.86
6	1246-G	1	Cover Plate	2.46
7	1245-A <sup>2</sup>	1	Mounting Bracket	6.19
8	1245-B <sup>2</sup>	1	Ratchet Handle	23.42
9	1245-D <sup>2</sup>	1 set	3-Arm Knob (3/set)	10.10
10	1245-S <sup>2</sup>	1	Carriage Bolt	3.84
11	1245-U <sup>2</sup>	1	Runner Pad	2.70

<sup>1</sup> New style for No. 246 Trimmers produced after 10/11/04

<sup>2</sup> Parts common with the No. 245 Trimmer

<sup>3</sup> See current product catalog for No. G-640-10 (10/tube) and No. G-642-C (100/box) Universal Carpet Trimmer Blades



**Beno J. Gundlach Company**  
211 North 21st Street • P.O. Box 544  
Belleville, IL 62222 • U.S.A.  
TEL: 618 233-1781 • FAX: 618 233-3636  
[www.benojgundlachco.com](http://www.benojgundlachco.com)