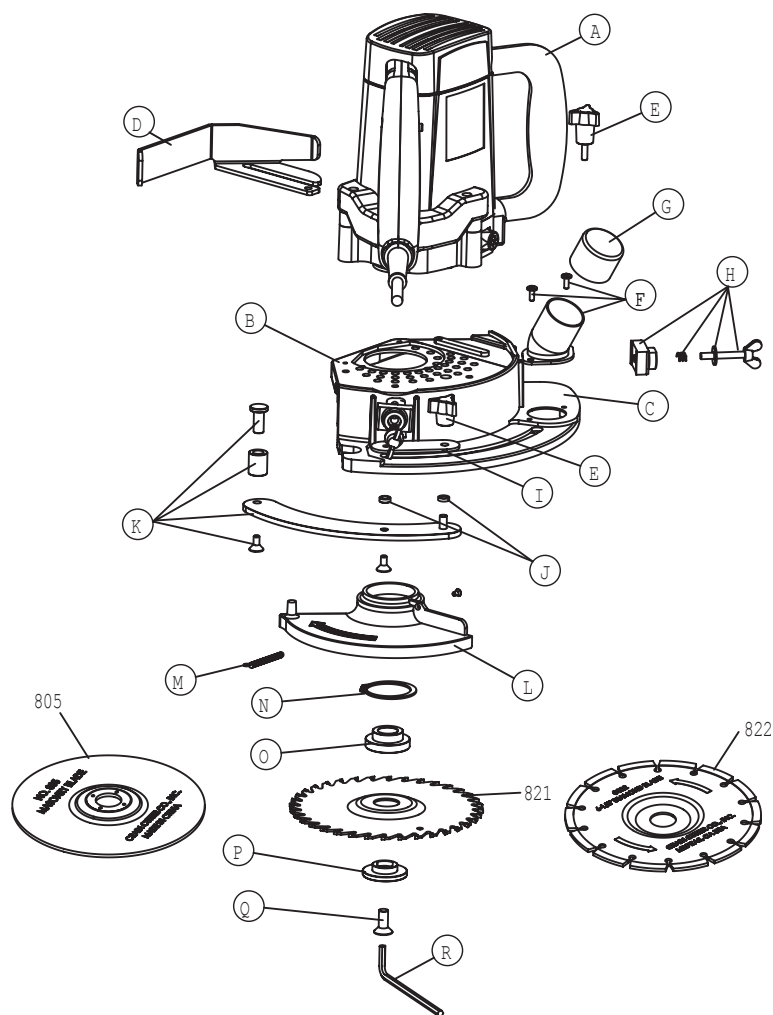


Parts Diagram

GUNDLACH

No. 812 Super Saw Kit



Item No.	Description	List Price
1812-A	Power Unit, 120V	\$123.75
1812-B	Housing	\$43.45
1812-C	Height Adjuster	\$41.25
1812-D	Depth Gauge	\$52.25
1812-E	Three Arm Knob Set (2)	\$17.33
1812-F	Vacuum Flange & Fast. (5)	\$19.25
1812-G	Flange Cap	\$11.83
1812-H	Guide Washer Set (8)	\$17.49
1812-I	Stabilizer Retainer & Fast. (4)	\$19.25
1812-J	Bushing Set (2)	\$6.33
1812-K	Stabilizer & Fast. (4)	\$8.25
1812-L	Blade Guard	\$41.80
1812-M	Blade Guard Spring & Fast./3	\$11.00
1812-N	Blade Guard Snap Ring	\$4.13
1812-O	Blade Spacer	\$15.95
1812-P	Blade Clamp	\$16.28
1812-Q	Blade Screw	\$4.95
1812-R	Hex Key	\$8.25
1812-S	Carrying Case	\$30.25
1812-T	Carrying Case Latches (2)	\$11.00
1812-U	Switch	\$16.50
1812-V	Power Cord	\$14.25
1812-W	Brushes Set (2)	\$16.45
1812-X	Top Cover for Power Unit	\$10.00
1812-Y	Power Cord Strain Relief	\$5.00
1812-Z	Black Pull Handle	\$12.50
1812-1	Red Trigger Handle	\$25.00
1812-2	Blue Trigger Handle	\$25.00
1812-3	Blade Stop Assembly	\$30.00



Beno J. Gundlach Company

211 North 21st Street • P.O. Box 544
 Belleville, IL 62222 • U.S.A.
 TEL: 618 233-1781 • FAX: 618 233-3636
www.benojgundlachco.com

Quality Products Since 1927