



## Using and Maintaining **GUNDLACH** HEAT GUNS

### 4 Points to Check Before Using!

#### **Voltage**

Be sure the line voltage is the same as that shown on the heat gun, before plugging into the circuit.

#### **Ground Wire**

The heat gun is equipped with a 3 prong plug; it should be plugged into a 3-hole electrical receptacle that is properly grounded.

#### **To Prevent Shock or Serious Injury**

Never operate while the user is standing in water or on a wet surface.

#### **Keep Out of Reach of Children!**

### **Limited Warranty on Heat Guns**

Our Heat Guns are guaranteed for six months against defects in workmanship and materials from the time of shipment from our factory. **This warranty does not cover the heating element.**

In-warranty replacements due to defective material or workmanship (not misuse or abuse) will be made on a no charge basis. No replacement charges will be accepted without our authorization.

Our warranty will not apply if the Heat Gun has been tampered with, or where repairs or attempted repairs have been made by persons other than our employees, repairs due to normal wear, abuse in using the Heat Gun, accident, damage in transit, or if misuse is evident.

Each Heat Gun is inspected and tested before leaving our factory. Should a new Heat Gun fail to operate after it is unpacked from the carton, return the complete unit to our factory, or to our distributor, immediately.

Beno J. Gundlach Co. will not assume any responsibility for damage or accidents resulting from the use of our Heat Guns, due to misapplication or nonadherence to safety and precautionary measures.

# Safety

## Warning:

Hidden areas such as behind walls, ceilings, floors, soffitboards and other panels may contain flammable materials that could be ignited by the heat gun when working in these locations. The ignition of those materials may not be readily apparent and could result in property damage and injury to persons.

When working in these locations, keep the heat gun moving in a back-and-forth motion. Lingering or pausing in one spot could ignite the panel or the material behind it.

## Warning: Important Safety Instructions

Extreme care should be taken when stripping paint. The peelings, residue and vapors of paint may contain lead, which is poisonous. Any pre-1977 paint may contain lead and paint applied to homes prior to 1950 is likely to contain lead. Once deposited on surfaces, hand to mouth contact can result in the ingestion of lead. Exposure to even low levels of lead can cause irreversible brain and nervous system damage; young and unborn children are particularly vulnerable.

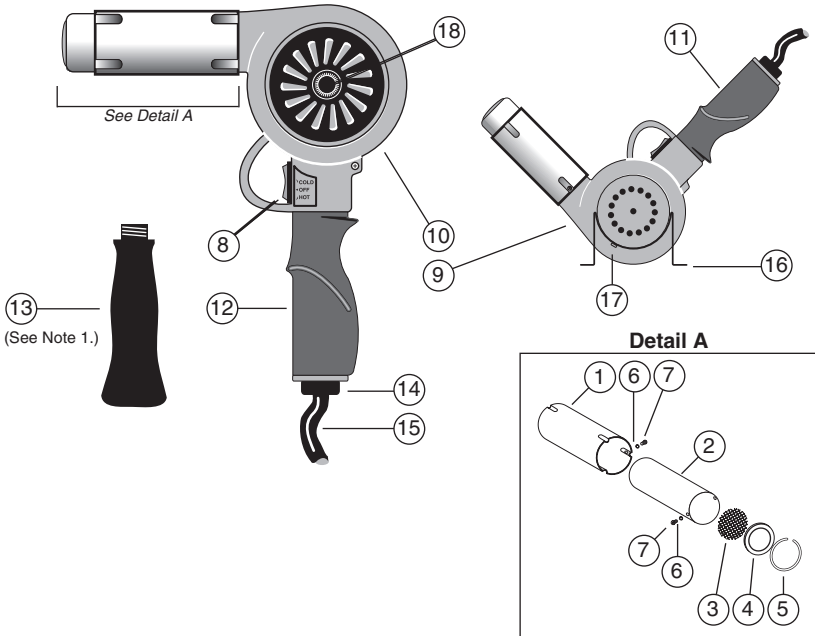
Before beginning any paint removal process you should determine whether the paint you are removing contains lead. This can be done by your local health department or by a professional who uses a paint analyzer to check the lead content of the paint to be removed. **Lead-based paint should only be removed by a professional and should not be removed using a heat gun.**

## Persons removing paint should follow these guidelines:

1. Move the work piece outdoors. If this is not possible, keep the work area well ventilated. Open the windows and put an exhaust fan in one of them. Be sure the fan is moving the air from inside to outside.
2. Remove or cover any carpets, rugs, furniture, clothing, cooking utensils and air ducts.
3. Place drop cloths in the work area to catch any paint chips or peelings. Wear protective clothing such as extra work shirts, overalls and hats.
4. Work in one room at a time. Furnishings should be removed or placed in the center of the room and covered. Work areas should be sealed off from the rest of the dwelling by sealing doorways with drop cloths.
5. Children, pregnant or potentially pregnant women and nursing mothers should not be present in the work area until the work is done and all clean up is complete.
6. Wear a dust respirator mask or a dual filter (dust and fume) respirator mask which has been approved by the Occupational Safety and Health Administration (OSHA), the National Institute of Safety and Health (NIOSH), or the United States Bureau of Mines. These masks and replaceable filters are readily available at major hardware stores. Be sure the mask fits. Beards and facial hairs may keep masks from sealing properly. Change filters often. **Disposable paper masks are not adequate.**
7. Use caution when operating the heat gun. Keep the heat gun moving as excessive heat will generate fumes which can be inhaled by the operator.
8. Keep food and drink out of the work area. Wash hands, arms and face and rinse mouth before eating or drinking. Do not smoke or chew gum or tobacco in the work area.
9. Clean up all removed paint and dust by wet mopping the floors. Use a wet cloth to clean all walls, sills and any other surface where paint or dust is clinging. **Do not sweep, dry dust or vacuum.** Use a high phosphate detergent or trisodium phosphate (TSP) to wash and mop areas.
10. At the end of each work session put the paint chips and debris in a double plastic bag, close it with tape or twist ties, and dispose of properly.
11. Remove protective clothing and work shoes in the work area to avoid carrying dust into the rest of the dwelling. Wash work clothes separately. Wipe shoes off with a wet rag that is then washed with the work clothes. Wash hair and body thoroughly with soap and water.

**Save these instructions.**

# No. 750-A Gundlach Heat Gun



Key	Item Number	Qty. Req.	Description
1	10300	1	Shield
2	10311	1	Nozzle
3	10611	1	Nozzle Screen
4	10911	1	Orifice Plate
5	10900	1	Nozzle Retaining Ring
6	10974	2	Lockwasher
7	10931	2	Screw
8	10630	1	Rocker Switch
9	0283479	1	Main Housing
10	0283480	1	Housing Cover
11	0283487	1	Handle Grip Half
12	0283488	1	Handle Grip Half
13	10602	1	Handle (see Note 1.)
14	10604	1	Strain Relief
15	10701	1	#14 3-Wire Cord
16	10330	1	Stand
17	10939	1	Screw
18	10606	1	Blower Wheel
—	10722	1	Wire Lead, Terminals Both Ends
—	10723	1	Wire Lead, One End Stripped
—	10724	1	Short Jumper Wire

**Notes:**

1. If your handle looks like this, it must be replaced with the same part, No. 10602. All parts above, except keys 9–12, are compatible with your heat gun.
2. See current product catalog for No. 755-K Replacement Heat Element Kit for No. 750-A Electric Heat Gun.

# Operating Tips

**To start:** Move switch to the **HOT** position, which starts motor and heat unit.

**Important:** Be sure at all times that the motor is running when the heat is on.

After using the Heat-Blo Gun, flip the switch to the **COLD** blowing position and allow to operate for several minutes to cool the element and help preserve and extend its life; then, turn the switch to the **OFF** position. Do not stop the flow of heated air by holding the tip too close to a surface, as this will cause overheating and damage to the heating element.

The shield supplied with each heat gun is for the operators protection. Be sure that the shield covering the nozzle of the heat gun is cool before storing or placing on or near flammable materials. Also, be sure that the shield that fits over the nozzle of the heat gun is securely attached at all times. If repairs are needed we recommend that the unit be returned to the factory.

**To avoid fumes or explosion:** Never use the heat gun in an atmosphere where explosive gases or combustible gases exist. Do not direct the nozzle of the gun directly towards a combustible substance or material. Always place the heat gun upon its stand when setting it down.

**CAUTION:** When the heat gun is on or in use, **do not touch the nozzle with your bare hands or any part of your body!**

**Extension cord:** If it is necessary to use an extension cord with the heat gun, it should be at least 14 gauge wire size to avoid a serious drop in voltage, loss of power, or possible damage because of overheated wires.

**Temperatures:** The temperature varies at the nozzle depending upon the distance between the nozzle tip and the part being heated. **The gun nozzle should not be held closer than ½” from the part being heated.** Temperature is controlled by adjusting the amount of air taken in at the air intake cover. Maximum heat is reached when the louvers are fully closed. Minimum heat is attained when the louvers are fully opened. To adjust heat, turn knob on the air intake cover and open or close louvers as desired.



## **Beno J. Gundlach Company**

211 North 21st Street • P.O. Box 544  
Belleville, IL 62222 • U.S.A.

TEL: 618 233-1781 • FAX: 618 233-3636

[www.benojgundlachco.com](http://www.benojgundlachco.com)