

Scrape-Away®

You have just purchased a Scrape-Away tool to prepare concrete floors for cleaning or refinishing.

The 6 carbide blades are designed to remove most types of dry coatings flush with the surface of the concrete. Each carbide blade has 8 cutting edges and are numbered 1–8. When one edge is worn out, just rotate the carbide to an unused edge. The life of the carbide will depend on the surface of the concrete and the material being removed.

A spare hardware kit is included with each Scrape-Away. This kit will ensure that your unit will operate at top efficiency and provide maximum safety to the operator. Inspect the Scrape-Away every 3 hours of operation for worn or broken parts and replace if needed.

Using the Scrape-Away®

Please read and fully understand the following precautions before attempting to use unit.

- The SCRAPE-AWAY is designed only to be used for removing material on concrete floors. Use on any other type may result in machine damage and/or personal injury.
- Do not mount or service the Scrape-Away on a floor machine unless the unit is unplugged.
- Do not use on any floor machines designed to run over 175 RPM.
- Do not use with any flammable materials (solvents, fuels, thinners, etc.), which could result in fire or explosion.
- Do not use the Scrape-Away on rough, pitted or cracked concrete; this could result in machine damage and/or personal injury.
- Do not heel the floor machine.
- We recommend that when first starting to clean an area, start where the build-up is the least.
- Do not use around floor mounted electrical boxes, cables or pipes.
- Always use protective eye wear, and footwear when operating Scrape-Away.
- Frequently check screws for tightness in drive plate and carbide blades.

Warning

Do not alter or modify this product without manufacturer's written approval. Failure to comply with these warnings could result in serious bodily injury or property damage.

See reverse side for mounting details of replacement cutter assemblies.



Beno J. Gundlach Company

211 North 21st Street • P.O. Box 544
Belleville, IL 62222 • U.S.A.

TEL: 618 233-1781 • FAX: 618 233-3636
www.benojgundlachco.com

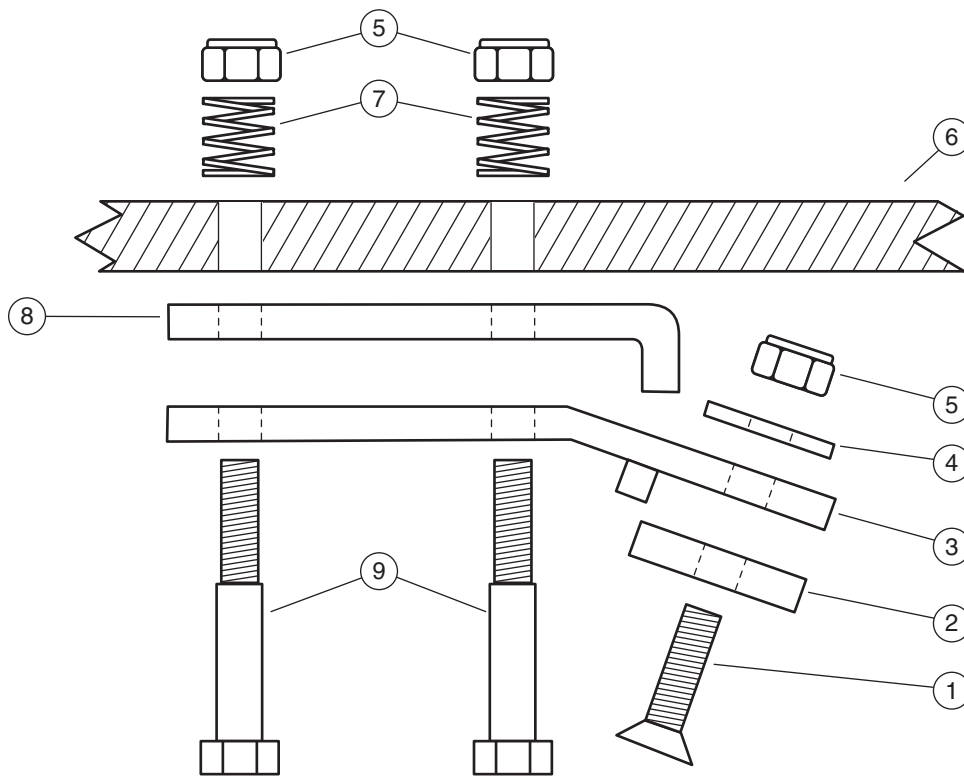
Mounting Details of Replacement Cutter Assemblies

If mounting holes in the base plate become elongated from wear, transfer or install new assemblies to a new set of mounting holes in the base plate.

Place the SCRAPE-AWAY on a bench with the cutter assemblies facing up. Reassemble the cutter assemblies, using the diagram and the old assemblies as a guide. *Do not reuse the nuts that compress the springs.*

Tighten the mounting nuts until they are flush with the top of the bolt. Check the distance from the bottom of the nut to the top of the mounting plate, this should measure $\frac{3}{8}$ ".

The individual cutter assemblies are to be positioned by placing two assemblies next to each other leaving one open space between the set of two assemblies with the leading edge of the blade pointing to a clockwise rotation as viewed from the bottom. Check to see that the carbide is resting squarely against the back stop and that the nut is secure.



- | | |
|---|-----------------------------------|
| 1. $\frac{1}{2}$ " Phillips Flat Head Screw | 6. Mounting Plate |
| 2. Carbide Blade | 7. Spring |
| 3. Bottom Scraper Bracket | 8. Top Pivotal Bracket |
| 4. $\frac{1}{4}$ " Flat Washer | 9. $1\frac{3}{8}$ " Hex Head Bolt |
| 5. $\frac{1}{4}$ " Lock Nut | |

Note: *Inspect all cutter assemblies every three (3) hours of operation and replace all worn or broken parts.*