



Quick Pitch® and Kirb-Perfect™

Installation Steps



BEGINNING OF SHOWER INSTALLATION



FOLD UP LINER TO INSTALL PREPITCH



INSTALLING PREPITCH



COMPLETED PREPITCH



INSTALL PAN LINER



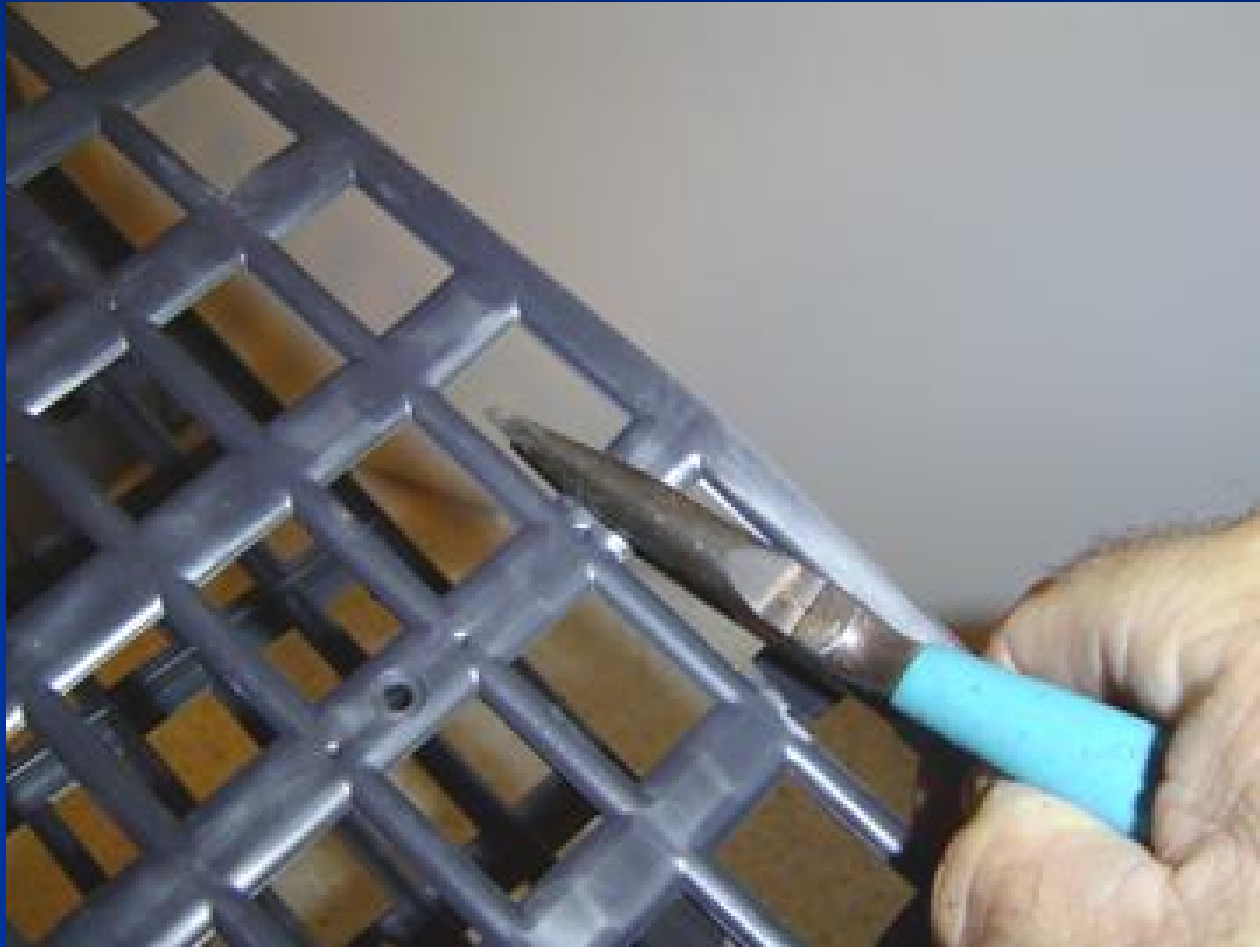
SCREW CURB TOGETHER



CUT WITH GRINDER



OR BREAK OFF WITH SNIPS



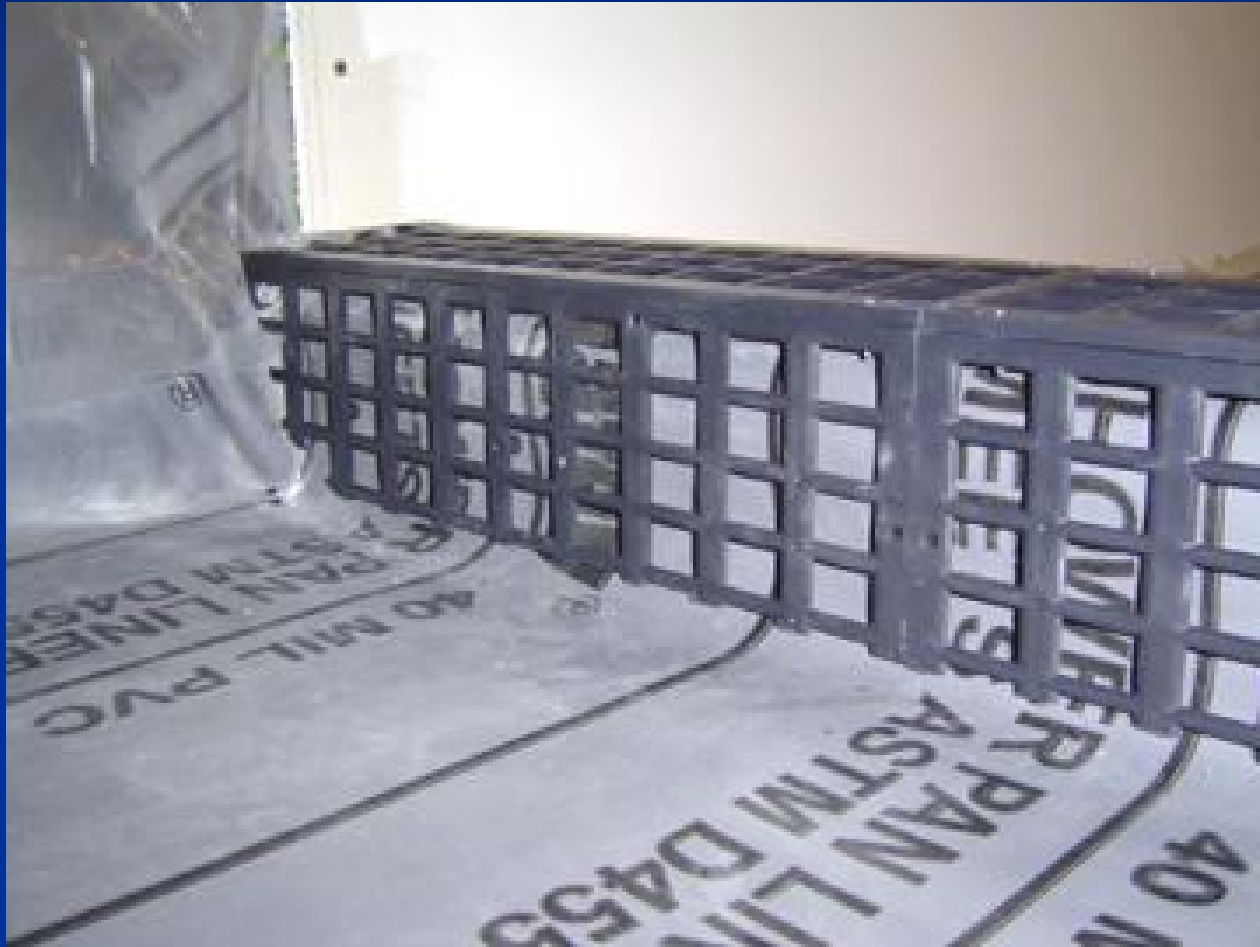
LAYOUT BEST TO FIT CURB



FIT CURBS TOGETHER



TRIM TO FIT FOLDS ON INSIDE OF CURB



CHECK FOR PITCH



SECURE TO EXTERIOR OF CURB



READY FOR NEXT STEP



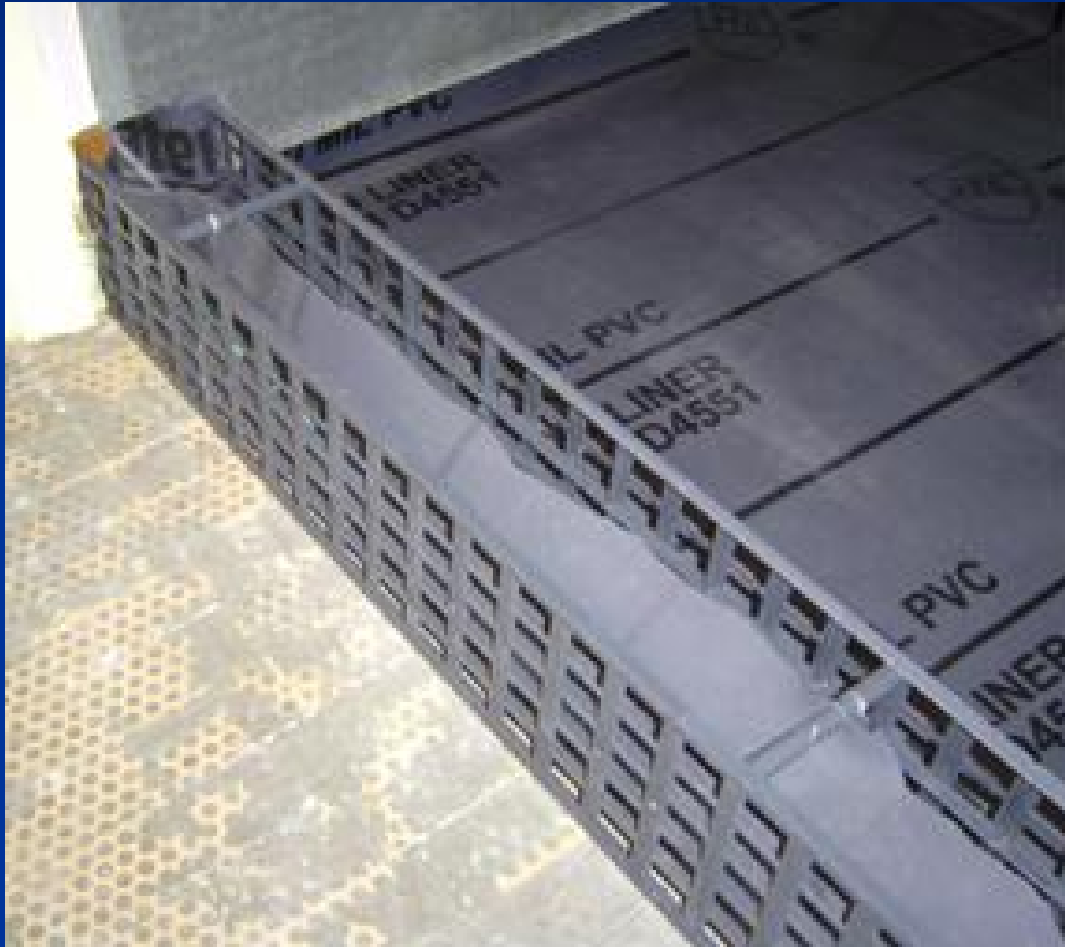
INSTALLATION WITHOUT WOOD



ASSEMBLING CURB WITH LINER IN CENTER



TRIM LINER



TRIM LINER



FILL CURB WITH LIGHT- WEIGHT MUD



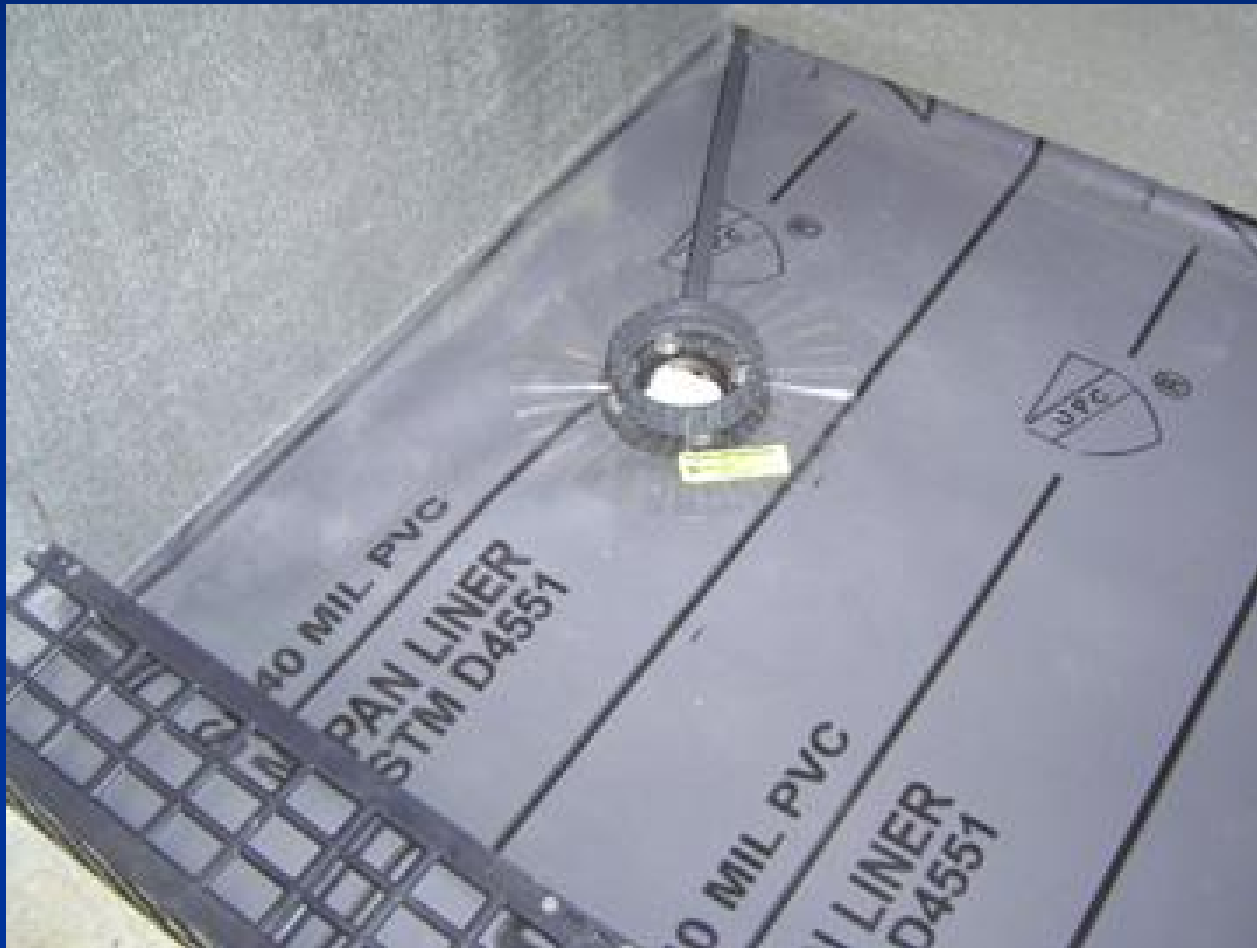
MEASURE OUT FLOAT STICKS



CUT TO LENGTH



INSTALL FLOAT STICKS



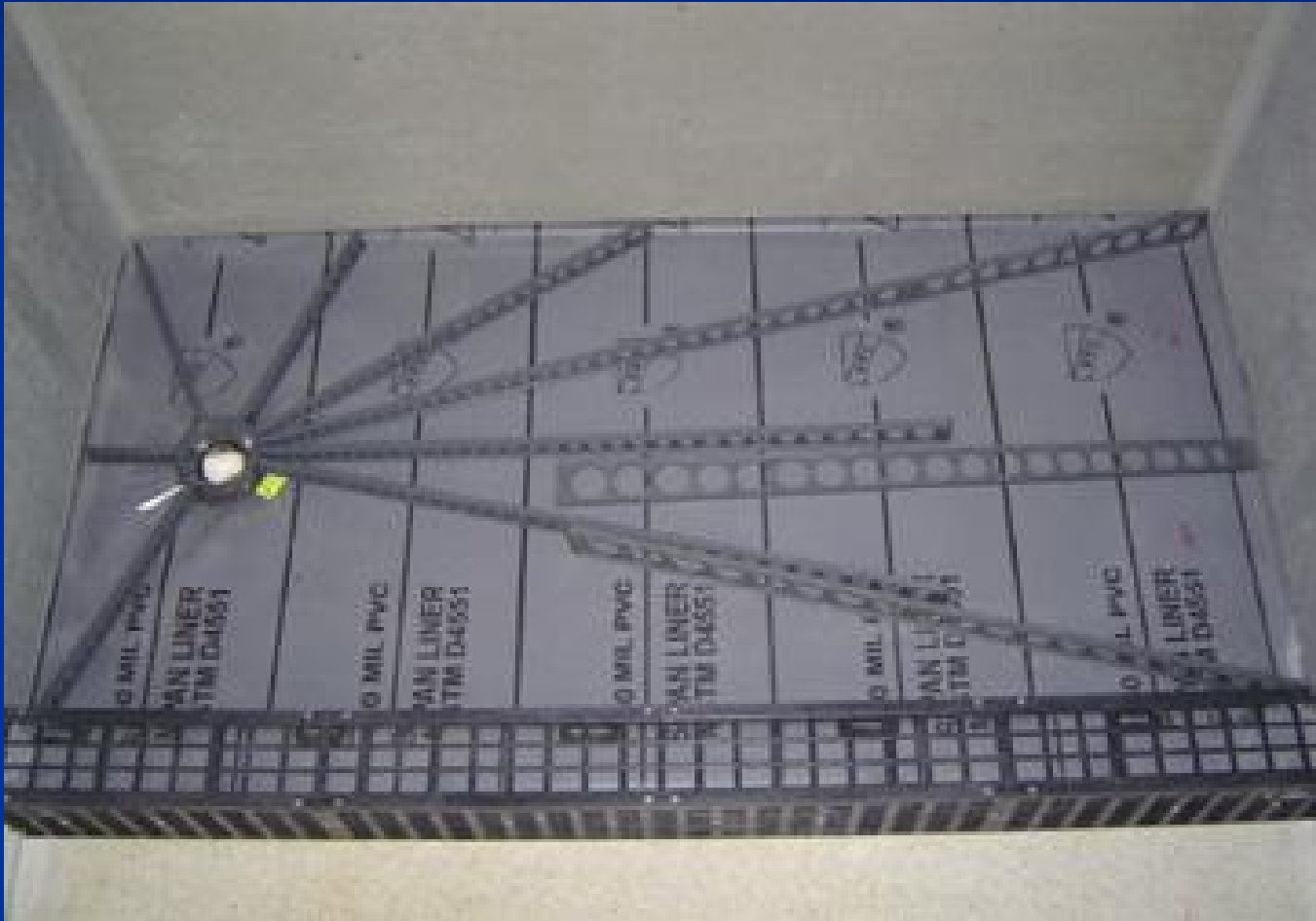
ADD EXTENDED STICK WHEN NECESSARY



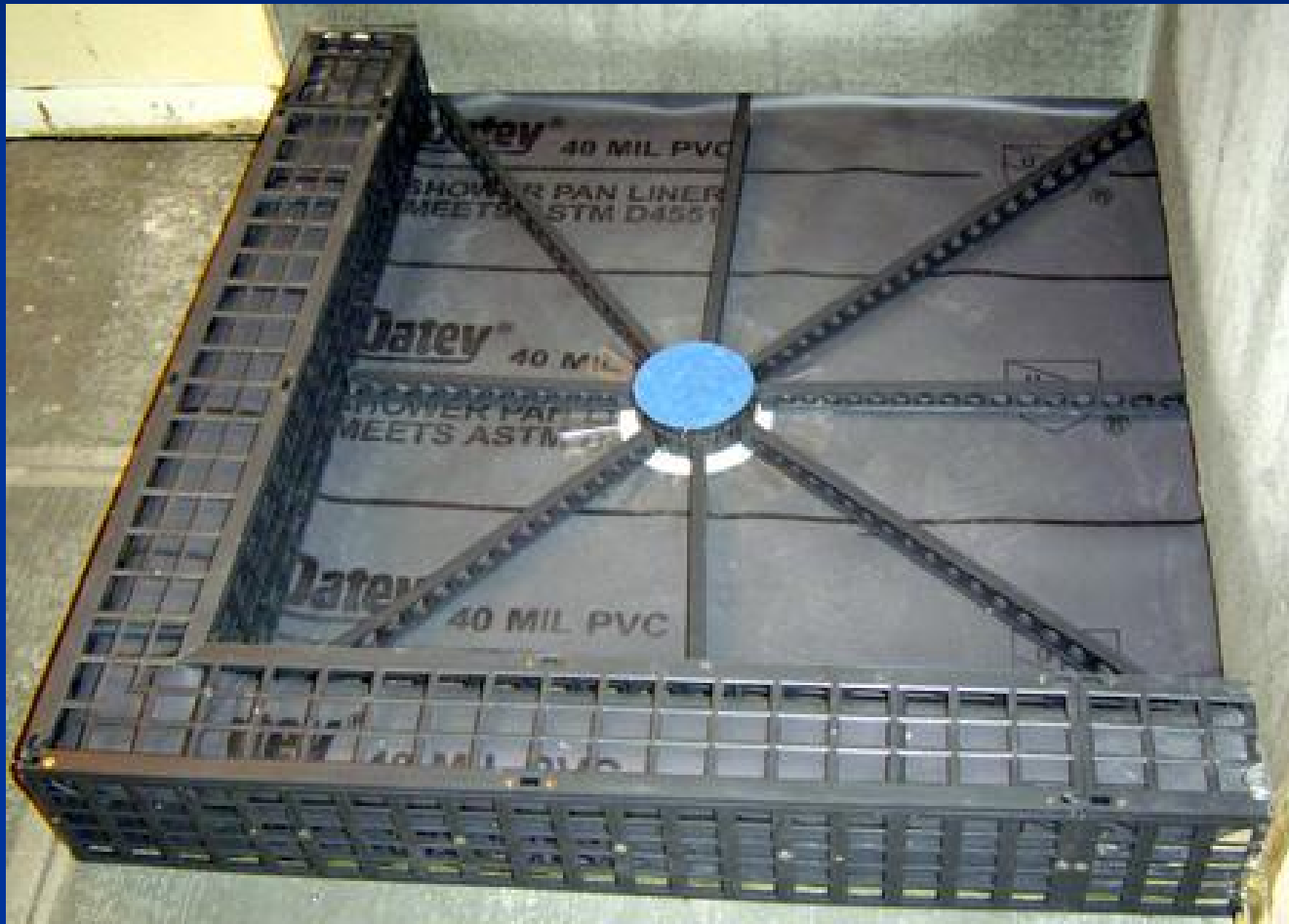
ATTACH EXTENDED STICK



CONTINUE ADDING FLOAT STICKS



KIRB-PERFECT AND QUICK PITCH



BEGIN FILLING



FILL BALANCE



ADD MUD TO CURB



FILL CURB



COMPLETED QUICK PITCH AND KIRB-PERFECT



COMPLETED QUICK PITCH AND KIRB-PERFECT

