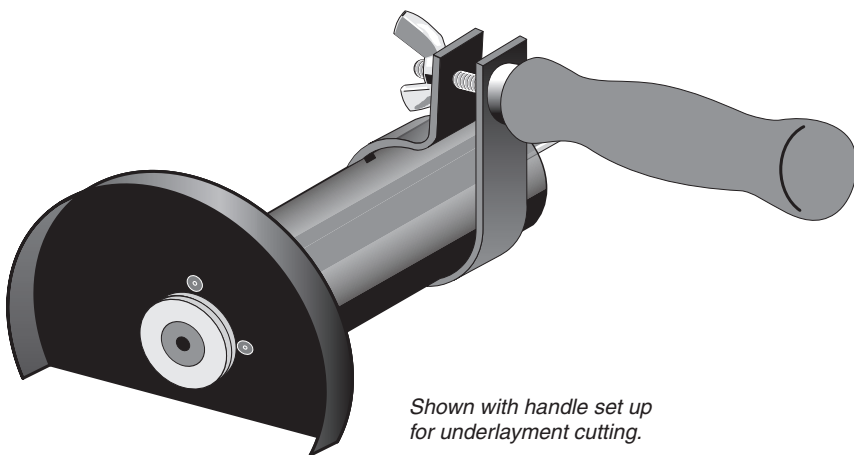


Instructions and Parts List for

# GUNDLACH

No. 338 Universal Cutting Tool



*Shown with handle set up  
for underlayment cutting.*

The No. 338 Universal Cutting Tool cuts:

- Underlayment in Toe Kick Areas
- Door Jambs

The No. 338 Universal Cutting Tool is designed for use with any corded  $\frac{3}{8}$ " or  $\frac{1}{2}$ " electric drill and stores easily in your tool box. Blades are sold separately.

**Note:** *The Universal Cutting Tool should always be operated between 1,750 RPM and 2,500 RPM. Operate the drill in the forward position.*

---

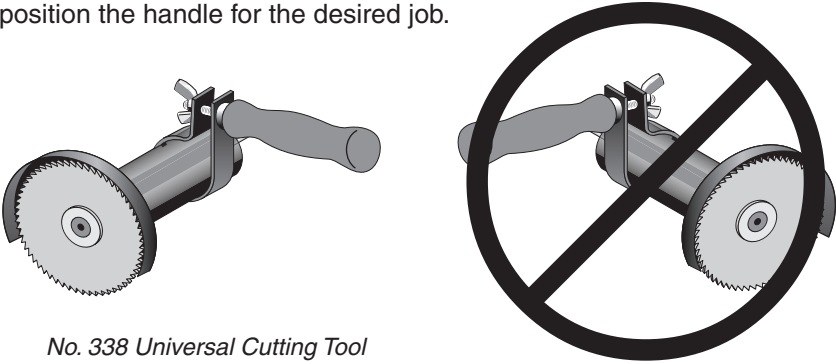
## Operating Instructions

---

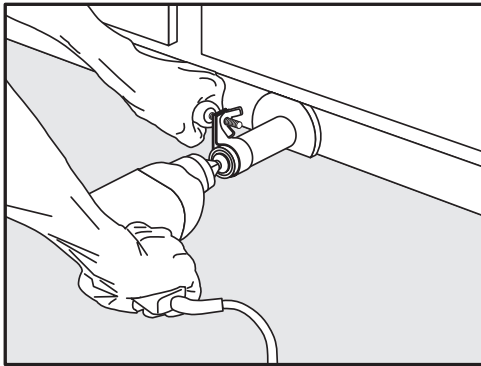
### Cutting Installed Underlayment

**DANGER** Proper handle setup and drill placement for cutting installed underlayment must be strictly followed.

To adjust the handle on the No. 338 Universal Cutting Tool, simply loosen the wing nut and position the handle for the desired job.



*No. 338 Universal Cutting Tool  
shown with handle set up for  
cutting installed underlayment.*



The tool cuts  $\frac{7}{8}$ " deep to within  $\frac{1}{8}$ " from the backboard of toe space area for underlayment removal. To cut installed underlayment, position the No. 338 Universal Cutting Tool and the drill as shown above. Cut into the underlayment pulling the drill from right to left.

---

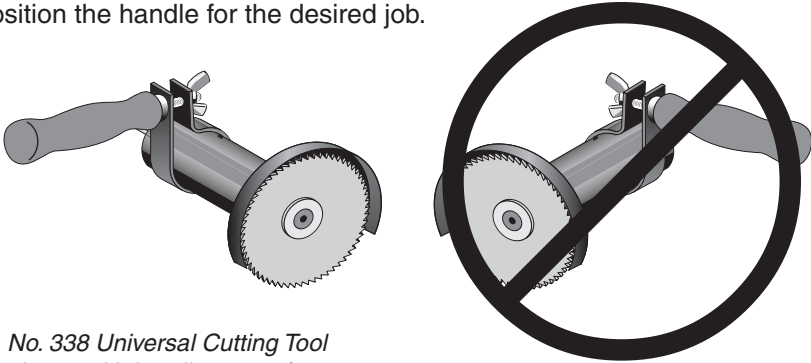
## Operating Instructions

---

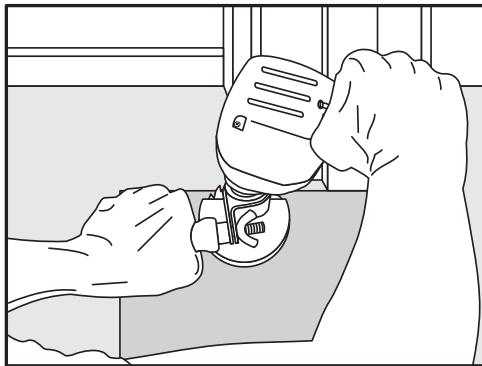
### Cutting Door Jambs

**DANGER** Proper handle setup and drill placement for cutting door jambs must be strictly followed.

To adjust the handle on the No. 338 Universal Cutting Tool, simply loosen the wing nut and position the handle for the desired job.

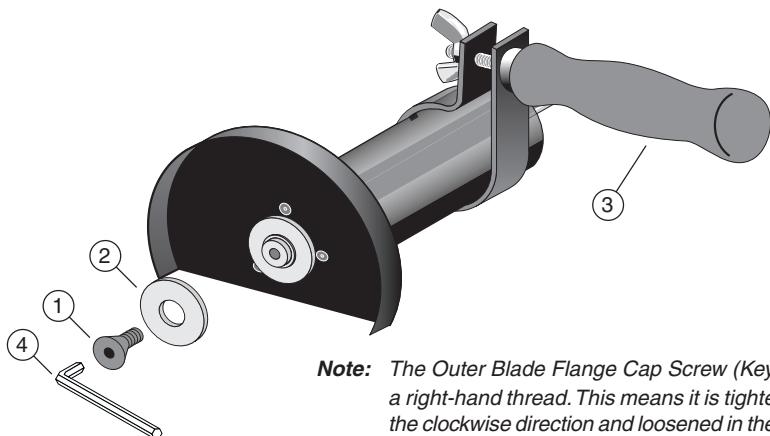


*No. 338 Universal Cutting Tool shown with handle set up for cutting door jambs.*



The tool cuts  $\frac{7}{8}$ " deep,  $\frac{1}{8}$ " high into any door jamb. To fit the floor covering underneath the door jamb, measure the clearance needed and, if necessary, place a scrap piece of the floor covering material against the door jamb. Place the shaft of the drill in a vertical position. Cut into the door jamb moving the drill from left to right. This will produce the proper space needed to install the floor covering material.

## No. 338 Universal Cutting Tool



**Note:** The Outer Blade Flange Cap Screw (Key ①) is a right-hand thread. This means it is tightened in the clockwise direction and loosened in the counterclockwise direction. The use of an anti-seize grease is recommended to assist screw removal.

Key	Item Number	Qty Req.	Description
1	338-01	1	Outer Blade Flange Cap Screw
2	338-02	1	Outer Blade Flange
3	338-03	1	Handle with Bracket and Wing Nut
4	338-04	1	5/32" Long Arm Hex Key

## Blades for the No. 338 Universal Cutting Tool



**No. 338-P**

60-Tooth Steel Blade



**No. 338-C424**

24-Tooth Carbide Tipped Blade

Two blades are available for use with the Universal Cutting Tool. The No. 338-P is an economically priced steel tooth blade. The No. 338-C424 is a carbide-tipped blade for longer life.

**Warning:** When installing either blade, make sure the outer blade flange fits flush against the blade so that it is properly seated into the shaft.



### Beno J. Gundlach Company

211 North 21st Street • P.O. Box 544  
Belleville, IL 62222 • U.S.A.

TEL: 618 233-1781 • FAX: 618 233-3636  
[www.benojgundlachco.com](http://www.benojgundlachco.com)