

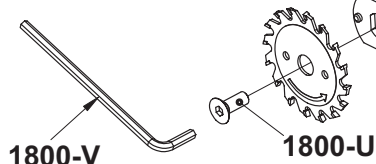
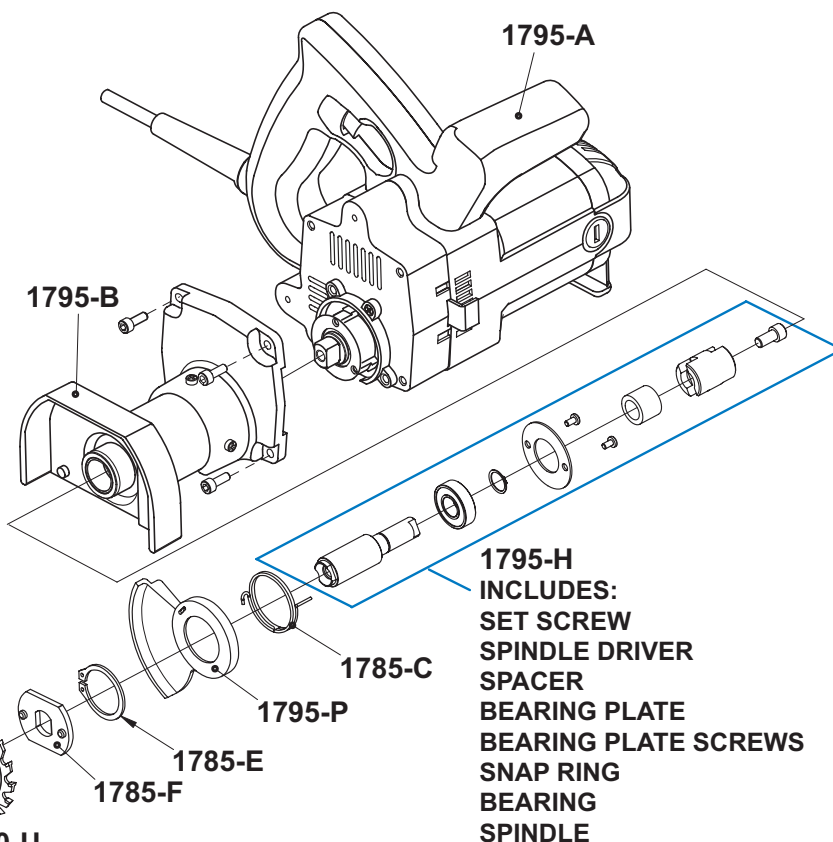
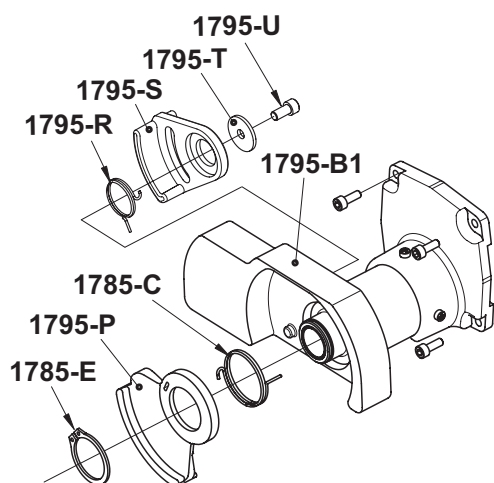
Parts Diagram

GUNDLACH

No. 795 Toe-Kick Saw



| Item No. | Description | List Price |
|----------|--|------------|
| 1795-A | 120V Power Unit | \$192.50 |
| 1795-B | Housing - Complete (includes P/N 1795-H) | \$156.09 |
| 1795-B1 | Double Guard Housing Complete | \$156.09 |
| 1795-E | Set Screw | \$3.16 |
| 1795-G | Carrying Case | \$27.50 |
| 1795-H | Spindle Driver Assembly | \$37.00 |
| 1795-J | Brush Set | \$12.71 |
| 1795-K | Power Cord | \$13.75 |
| 1795-L | Switch | \$13.86 |
| 1795-M | Carrying Case Latch Set | \$3.75 |
| 1795-N | Spindle with Gear | \$20.00 |
| 1795-O | Armature with Fan | \$27.50 |
| 1795-P | Primary Blade Guard | \$27.90 |
| 1795-R | Secondary Guard Return Spring | \$3.16 |
| 1795-S | Secondary Guard | \$27.90 |
| 1795-T | Secondary Guard Washer | \$3.75 |
| 1795-U | Secondary Guard Screw | \$3.75 |
| 1795-V | Power Cord Strain Relief | \$5.00 |
| 1795-W | Armature Bearing Set (2) | \$11.50 |



Beno J. Gundlach Company

211 North 21st Street • P.O. Box 544
 Belleville, IL 62222 • U.S.A.
 TEL: 618 233-1781 • FAX: 618 233-3636
www.benogundlachco.com